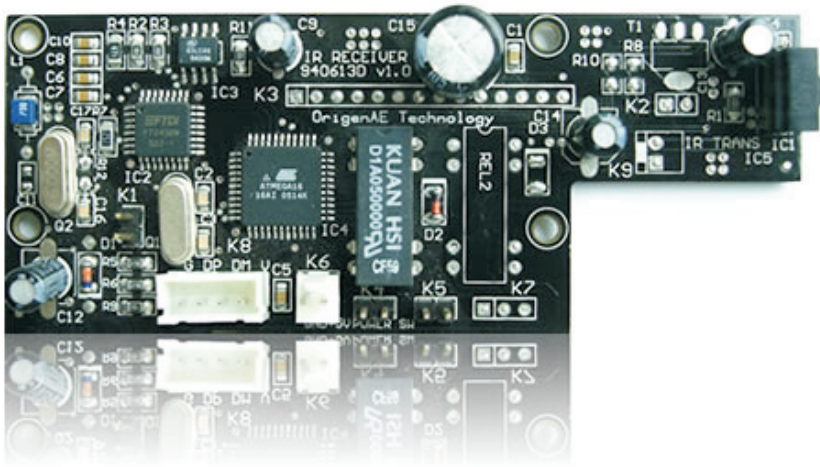
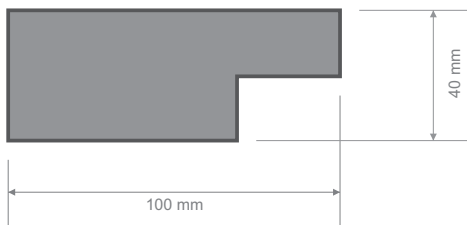


IR110



description

The OrigenAE IR110 is based on the flexible IR Trans solution. the IR solution will work with both Windows and Linux operating systems. It is powered from the ATX power cable and connected via USB, so no annoying external cables. Another key feature is the ability to switch your HTPC on from a totally of state (not just sleep mode, but OFF). This coupled with full mce compatibility make this the IR solution of choice.



features

- full MCE compatibility
- linux drivers available
- fits X15e
- supplied with philips mce remote
- learns any remote
- scrolling display
- displays time in standby
- switch PC on from off state

origenae.com

specification

dimensions	- 100mm X 40mm X 20mm
software support	- MCE (XP & Vista), Linux
power requirements	- 5V
power connectors	- 24 to 24 pin ATX thru-cable
display type	- none
interface type	- usb header
software supplied	- irtrans
ir range	- 10m (max)
remote supplied	- philips mce remote

